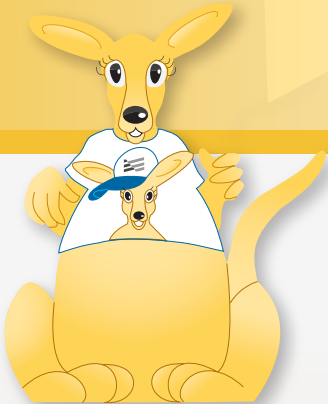


AMERITUS ENTERAL EXTENSION SETS

FOR ENTERAL FEEDING ONLY



Neonatal & Infant
PRODUCTS

ENTERAL ONLY EXTENSION SETS

Ameritus offers a full line of dedicated extension sets assuring patient safety, ease of use and versatility.

AMERITUS[®]
Medical Products

AMERITUS ENTERAL EXTENSION SETS

FOR ENTERAL FEEDING ONLY

ASSURE PATIENT SAFETY

Features

- AMERITUS Enteral Only Extension Sets have orange color coding and striped tubing to provide quick and easy visual identification of enteral feeding lines and connections
- Both Male and Female connectors are designed to prevent misconnections to standard IV lines and stopcocks
- **OC-ENT** Series Extension Sets are available in 2 standard lengths, custom lengths may be provided upon request
- **YOC-ENT-060** Extension Sets have an additional side medication port that eliminates the need to disconnect the feeding line
- **LBOC-ENT-060** Extension Sets feature large bore tubing to improve flow rates when feeding with fortified formula or breast milk
- Sterile and single packed
- Latex Free and Non-DEHP
- Made in the USA



Enteral Feeding Extension Sets 36", 60"
OC-ENT SERIES



BIFURCATED Enteral Feeding Extension Set w/ Side Medication Port, 60"
YOC-ENT-060



LARGE BORE Enteral Feeding Extension Set, 60"
LBOC-ENT-060

ORDERING INFORMATION

Catalog Number	Description	Quantity
OC-ENT-036	Enteral Feeding Extension Set, Length 36" Orange-Striped Minibore Tubing, Approximate Priming Volume = 1.30mL , Oral Female Connector, Universal Enteral Male Connector, Non-Removable Slide Clamp, Non-DEHP, Latex Free, Sterile	100/Case
OC-ENT-060	Enteral Feeding Extension Set, Length 60" Orange-Striped Minibore Tubing, Approximate Priming Volume = 1.70mL , Oral Female Connector, Universal Enteral Male Connector, Non-Removable Slide Clamp, Non-DEHP, Latex Free, Sterile	100/Case
YOC-ENT-060	Bifurcated Enteral Feeding Extension Set With Med Port, Length 60" Orange-Striped Minibore Tubing, Approximate Priming Volume = 2.10mL , Oral Female Connector, Universal Enteral Male Connector, Non-Removable Slide Clamps, Non-DEHP, Latex Free, Sterile	100/Case
LBOC-ENT-060	Large Bore Enteral Feeding Extension Set, Length 60" Orange-Striped Tubing, Approximate Priming Volume = 5.00mL , Oral Female Connector, Universal Enteral Male Connector, Pinch Clamp, Non-DEHP, Latex Free, Sterile	100/Case

Please contact our customer service department for additional information.

AMERITUS[®]
Medical Products

Distributed by:

Kentec Medical, Inc.

17871 Fitch, Irvine, CA 92614

TEL 949.863.0810 FAX 949.833.9730

TOLL FREE (USA only) 800.825.5996

sales@ameritusmedical.com

www.ameritusmedical.com



Neonatal & Infant
PRODUCTS

DISTRIBUTED BY: